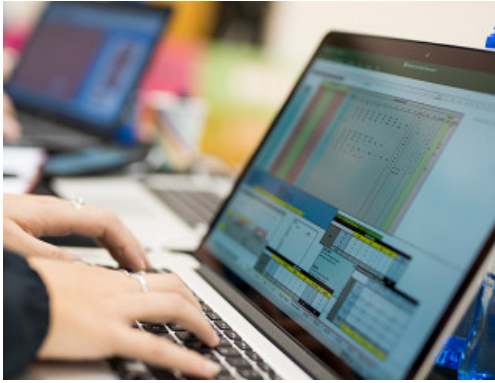




# Postgraduate Diploma in Applied Science



**Domestic fee:** \$9,652

**International fee:** \$23,330

Compulsory student levy >  
StudyLink >

\*Fees are approximate, subject to change and exchange rates

Location	Dunedin
Duration	One year full-time; two years part-time
Delivery	Blended, distance delivery

Credits	120
Level	8
Start	February
Apply	Until start date

## With specialties in Performance Analysis, Physical Conditioning or Exercise and Health

This qualification will help you extend and deepen your knowledge of the underpinning base theories and procedures used in the practice environment, in a wider and more encompassing scope than within our Postgraduate Certificate programme. You will also gain a greater understanding of the roles of those who are working with you.

You will have completed an applied project, which allows you to address your practice from multiple perspectives and to position your practice within a wider industry context. This qualification prepares you for further postgraduate study or a career in advanced sport or exercise.

Graduates of this programme can expect to gain employment at advanced practitioner level within a professional organisational setting. This may include government or non-government sport, or exercise for health settings. Students will be trained in performance analysis, physical conditioning, or exercise for health. There is a large component of industry/practical experience within this programme.

Graduates who focused on Physical Conditioning will be eligible for accreditation with the Australian Strength and Conditioning Association. Graduates who focused on Performance Analysis will be eligible for International Society of Performance Analysis accreditation.

Graduates who focused on Exercise for Health will be eligible for accreditation with the New Zealand Register of Clinical Exercise Physiologists.

### Entry requirements

#### Minimum academic entry criteria

> The Bachelor of Applied Science (Level 7) OR an equivalent qualification at bachelor level in a related discipline OR equivalent documented professional experience.

#### English Language Requirements

> If English is not your first language, you must provide:

- > New Zealand University Entrance OR
- > Overall Academic IELTS 6.5 with no individual band score lower than 6.0 (achieved in one test completed in the last two years), OR
- > Acceptable alternative evidence of the required IELTS (see here for NZQA proficiency table and here for list of recognised proficiency tests).

If you need to improve your English Language skills, we offer a wide range of English programmes.

#### Additional criteria

- > All applicants who are accepted must obtain a First Aid Certificate, and complete the requirements of the Children's Act 2014 (including police vetting), prior to commencing classes.

#### Covid-19 vaccination information

- > As this programme is delivered on campus/on-site, you will need to provide us with a valid My Vaccine Pass *before* 1 February 2022 if you want to study with us.
- > All locations where our teaching occurs face-to-face are classed as an Otago Polytechnic site.
- > You will be asked to provide us with your My Vaccine Pass during your application and enrolment process.
- > Please be aware that we'll also ask for some extra details from you during this process. We're legally obliged to collect these due to these programme areas being covered by a Government mandate.
- > Please also be aware that you cannot apply for an OP exemption from our vaccination policy for this programme as it is covered by a Government vaccination Health Order.

You can find more information about our vaccination requirements here. And, if you still have further questions, please visit our FAQs page which you can find here.

#### Pathways into this programme

Applicants without a base degree need to discuss options with the programme teaching team. Please email [ebstoo@op.ac.nz](mailto:ebstoo@op.ac.nz)

#### Additional costs

Learners are expected to purchase a uniform (\$200) - this is important for industry placements. In addition it is suggested that you have your own laptop/tablet that you are able to bring with you.

#### You will study

Within this programme you will choose one of the specialty areas; performance analysis, physical conditioning or exercise and health. These areas will have industry experience within them where you are applying the theory you are learning. In addition you will study a course in professional development which will prepare you to work within the industry and assist you to understand your learning needs. You will also have learning in either a specialist topic that supports the industry or you can negotiate your learning around either research or industry that will provide the opportunity to deepen your learning in a specific issue.

#### Your workload

This is a full time programme of study and students are expected to complete 30-35 hours per week. This programme is taught with intensive blocks, online classes and industry placements.

#### Programme structure

Structure	Course	Level	Credits
12 months FT 24 months PT	Choose one of: Performance Analysis Physical Conditioning Exercise and Health	8	30
	Professional Development	8	30
	Choose one of: Advanced Performance Analysis Advanced Physical Conditioning Advanced Exercise and Health	8	30

	Choose one of:	Negotiated study	8	30	+ Further study options
		Specialist topic (in sport science or in exercise & health)			

Graduates of

this programme will be able to continue their studies into the Master of Applied Science at Otago Polytechnic. Further study at other tertiary institutes is also possible.

#### Student loans/allowances

Student loans and allowances are for domestic students only. For information about student loans and allowances please visit the Studylink website. It is important to apply for your student loan/allowance at the same time as you apply for this programme, due to the length of time Studylink take to process.

Loan/allowance applications can be cancelled at any time if you decide to withdraw your programme application or if it is unsuccessful.

#### Recognition of prior learning

If you already have extensive knowledge and skills gained from practical experience in this area, enquire about our recognition of prior learning process at Capable NZ. You may have already gained credits towards this qualification in the course of your life. Visit the Capable NZ website.

#### Disclaimer

While every effort is made to ensure that this sheet is accurate, Otago Polytechnic reserves the right to amend, alter or withdraw any of the contained information. The fees shown in this document are indicative ONLY. Both domestic and international fees are subject to change and are dependent on the development and implementation of Government policies. Please note that additional fees may from time to time be required for external examination, NZQA fees and/or additional material fees.

International **+64 3 477 3014**  
 New Zealand **0800 762 786**  
 Email **info@op.ac.nz**

**Dunedin Campus**  
 Forth Street, Dunedin  
 Private Bag 1910  
 New Zealand 9054

**Central Otago Campus**  
 Corner Erris & Ray Streets  
 PO Box 16, Cromwell  
 New Zealand 9342

**Auckland Campus**  
 Level 2, 350 Queen Street  
 PO Box 5268, Auckland  
 New Zealand 1141