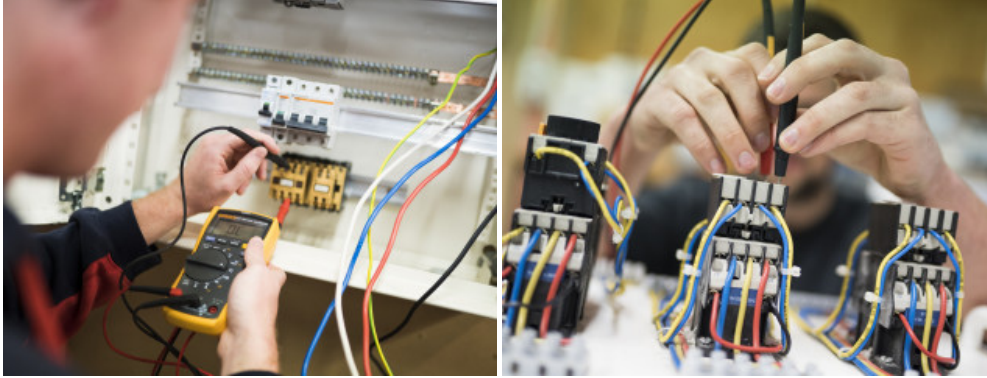




EWRB Competency Refresher Course



\$160 (if you need first aid training)

\$100 (if you don't need first aid training)

*Fees are approximate, subject to change and exchange rates

Location Dunedin Campus
Duration 1 day (8.30am-5.00pm)
Delivery On campus delivery
Please note: If you don't need to do first aid training, class will start at 11.00am

Start 29 March 2022
Apply You can apply anytime by clicking the light blue APPLY button. This will take you to our Eventbrite page where you can apply and pay online.



This is an EWRB course for New Zealand Registered Electrical Workers.

All registered electrical workers must hold a practising licence to carry out prescribed electrical work. You need to renew your licence every two years. Before you can do this, you need to complete the competency programme (if your last programme was over two years ago).

Otago Polytechnic is endorsed by the EWRB to run this course.

Once you've completed and passed this competency course, we'll update your details in the EWRB portal. When you apply to renew your practising licence, EWRB will already have confirmation that you have met your competency obligations and are eligible to renew.

Entry

- > You must complete the EWRB pre-course work prior to the class starting and provide evidence that you've done this. Visit <https://www.ewrb.govt.nz/for-registered-electrical-workers/your-licence/competence-programme-for-electrical-workers/>.
- > You'll also need to provide your electrical registration class at the time of enrolment.

Please note: There's a maximum of 12 places per course.

Course content

This is the Electrical Workers Registration Board refresher training (ET901001 EWRB Competence).

During this course, you will:

- > get a basic first aid and CPR refresher
- > be given an update on any relevant current electrical issues by the facilitator
- > complete a written assessment, made up of 10 questions. This is 'open book' - you can take reference material in with you to use during the assessment
- > do a practical testing exercise.

Equipment

Please bring the following material with you:

- > Safety glasses
- > Test equipment

Directions

This course will run in A block on Forth Street. Check our campus map [here](#).

Enquiries

If you have any questions, please email AlliedTrades@op.ac.nz

Disclaimer

While every effort is made to ensure that this sheet is accurate, Otago Polytechnic reserves the right to amend, alter or withdraw any of the contained information. The fees shown in this document are indicative ONLY. Both domestic and international fees are subject to change and are dependent on the development and implementation of Government policies. Please note that additional fees may from time to time be required for external examination, NZQA fees and/or additional material fees.



International **+64 3 477 3014**
New Zealand **0800 762 786**
Email **info@op.ac.nz**

Dunedin Campus
Forth Street, Dunedin
Private Bag 1910
New Zealand 9054

Central Otago Campus
Corner Erris & Ray Streets
PO Box 16, Cromwell
New Zealand 9342

Auckland Campus
Level 2, 350 Queen Street
PO Box 5268, Auckland
New Zealand 1141